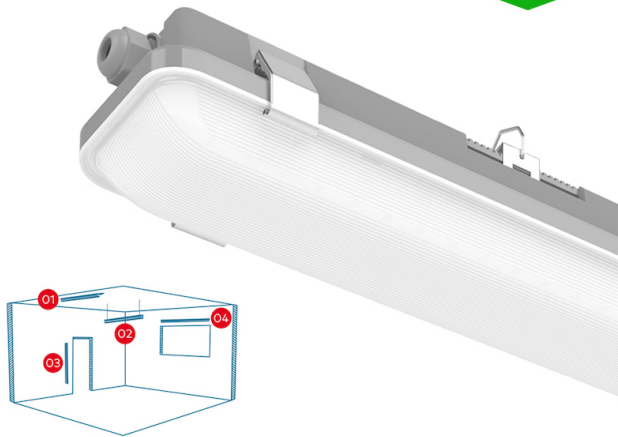


6ft LED Strip Light - 1800mm Non-corrosive IP65 Twin/180cm [1.8m] Vapour-proof / Weatherproof Batten

\$42.57

9,100lm

65W
6FT
1800mm



DURABLE & RELIABLE CONSTRUCTION

STAINLESS STEEL CLIPS & PC BODY

FROSTED DIFFUSER
allows soft, uniform light to be emitted from the entire length of the light fixture.

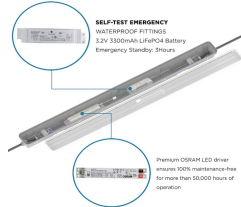
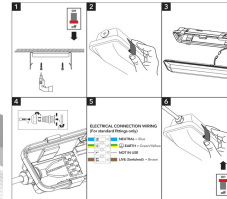


IP65 WATER & DUST PROOF

Can be used in open areas like parking lots, workshops, and other environments constantly exposed to moisture and dust.

IP65 LED Vapour-proof Fitting

Easy Installation and Maintenance



LED VAPOUR-PROOF FITTING

IP65 Water & Dust Proof

SUITABLE FOR MULTIPLE APPLICATIONS



DURABLE & RELIABLE CONSTRUCTION

STAINLESS STEEL CLIPS & PC BODY

FROSTED DIFFUSER
allows soft, uniform light to be emitted from the entire length of the light fixture.

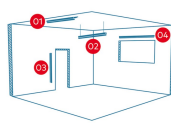


IP65 WATER & DUST PROOF

Can be used in open areas like parking lots, workshops, and other environments constantly exposed to moisture and dust.

VERSATILE MOUNTING OPTIONS

Perfect Replacement for Fluorescent



PRODUCT INFORMATION

LED Type	SMD2835 LEDs
Warranty	5 Year
Part L Compliant	Yes
Dimensions	1840mm x 100mm x 84mm
Weight	3.2kg
Equivalent to	1800mm Twin 58W T8

TECHNICAL SPECIFICATIONS

Power Consumption	65W
Input Voltage	220-280V AC
Power Factor	>0.95
Operating Temperature	-20°C to 40°C
L70 Rated Lifetime	+50,000hrs
Ingress Protection	IP65
Emergency Battery Type	LiFePO4 3300Mah Lithium Ion c/w Self Test

LUMEN PERFORMANCE

Luminous Efficiency	120lm/W
Beam Angle	120°
CRI (Colour Rendering Index)	>75
Lumen Output	9,100lm

AVAILABLE OPTIONS

Colour Temperature	Natural White 4000K
--------------------	---------------------

PRODUCT INFORMATION

TECHNICAL SPECIFICATIONS

LUMEN PERFORMANCE

AVAILABLE OPTIONS

3-Hour Emergency Version Yes

DMX 512 Compatible No

6ft / 1800mm [1.8m] Twin LED Strip Light - Osram® Driver

LiFePO4 Lithium Ion Emergency Battery - Environmentally friendly, fully recyclable

A revolutionary LED replacement to replace complete non-corrosive fluorescent tube fittings in 1800mm / 6ft twin variety - 65W / 9,100lm. With direct illumination technology, prove advantageous over both conventional fluorescents and LED tube counterparts in terms of industry leading efficacy: 120lm/W. Hence an L70 rated lifetime of 50,000+ hour and simple installation, this unit has proved to be the specifiers number one choice being deemed truly 'fit-and-forget'. Wide demand throughout commercial and industrial sectors, namely workshops, high-humidity areas and even outbuildings use being IP65 weather-proof. Toughened polycarbonate diffuser for uniform lumen output with robust PC base. Unit comes complete with stainless steel side clips, detachable hinged tray for ease of install, fixing brackets and M20 x 1.5 IP65 cable gland. Options of 4ft/1200mm, 5ft/1500mm & 6ft/1800mm. M3/NM3 emergency version includes internal built in 3-hour maintained emergency pack.