

SMD2835 24V Flexible LED Strip - 5m 20W/m (240 LED/m) - Single colour IP65

£61.26 £29.00

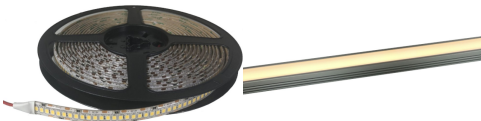
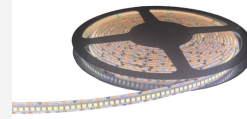
**REDUCE
LED NO
SPOTTING
DOTTING**

**5M Roll
20W/m
240leds/m**



DRIVER SELECTION GUIDE

| Total Length of Strip (m) | Total Load (Watts) | Driver Size (Watts) |
|---------------------------|--------------------|---------------------|
| 1m | 20W | 30W |
| 2m | 40W | 60W |
| 3m | 60W | 90W |
| 4m | 80W | 120W |
| 5m | 100W | 150W |
| 6m | 120W | 180W |
| 7m | 140W | 210W |
| 8m | 160W | 240W |
| 9m | 180W | 270W |
| 10m | 200W | 300W |



PRODUCT INFORMATION

| | |
|------------------|-----------------|
| LED Type | SMD2835 LEDs |
| Warranty | 3 Year Warranty |
| Part L Compliant | No |
| Dimensions | 5m x 10mm |
| Weight | 0.18kg |

TECHNICAL SPECIFICATIONS

| | |
|-----------------------|---------------|
| Power Consumption | 20W/m |
| Input Voltage | 24V DC |
| Operating Temperature | -20°C to 50°C |
| Ingress Protection | IP65 |

LUMEN PERFORMANCE

| | |
|--------------|-----------|
| Beam Angle | 120° |
| LED Quantity | 240LEDs/m |
| Lumen Output | 1400lm/m |

AVAILABLE OPTIONS

| | |
|---------------------------------------|--|
| Colour Temperature | Warm White 2800-3000K Natural White 4000-4500K |
| 3-Hour Emergency Version | No |
| Built-in Microwave Occupancy Detector | No |
| 1-10V Dimmable | With Compatible Driver |
| DALI Dimmable | With Compatible Driver |
| DMX 512 Compatible | Yes (via External DMX Decoder) |

****PLEASE NOTE LED STRIP IS EXTREMELY FRAGILE AND REQUIRES PROFESSIONAL INSTALLATION. PRODUCT SHOULD BE ORDERED/INSTALLED BY A QUALIFIED ELECTRIAN EXPERIENCED WITH LED STRIP/LOW VOLTAGE SYSTEMS.****

Profile depths of 12mm and above = NO SPOTTING**

Profile depths of 12mm and under = REDUCED SPOTTING**

****Tested with our own LED profile products using a Frosted Diffuser. PLEASE NOTE we cannot guarantee the same results when used in conjunction with other manufacturer's products.**

PLEASE NOTE - This strip is not compatible with our LED Strip connectors - requires soldering if cutting.

[DOWNLOAD LED STRIP LIGHT LED TAPE LIGHT INSTRUCTIONS - HOW TO INSTALL LED STRIP GUIDE / MANUAL](#)

DRIVER SELECTION GUIDE

| Total Length of Strip (m) | Total Load (Watts) | Driver Size (Watts)* |
|---------------------------|--------------------|----------------------|
| 1m | 20W | 30W |
| 2m | 40W | 60W |
| 3m | 60W | 100W |
| 4m | 80W | 100W |
| 5m | 100W | 150W |
| 8m | 160W | 360W |
| 10m | 200W | 360W |
| 12m | 240W | 360W |
| 15m | 300W | 360W |

Does the LED Tape come with Aluminium Profile?

We sell each item individually, so this product page is for the led tape/led strip only. Check out relate products below for our range of [aluminium led profile](#) here.

Can I cut the aluminium LED tape?

Yes, it can be cut with a pair of scissors or electrical cutters at specified points.

Do you offer a 'cut-to-size' service?

Yes, see above options for adding on custom cuts, just enter the number of cuts, and the measurements of each cut separated by commas, if multiple cuts. Items come with 1m cable. Please note - once custom cut, the items are non refundable.

Do you have corner pieces/how do I go around corners?

We don't do corner pieces for our LED Strip. For going around 90° corners, you would need to cut and solder a cable connection join or use a [led strip connector](#). NOTE - LED strip connectors may not fit in all LED profiles please check prior to ordering.

Do you have joining pieces/ how do I join LED aluminium profile?

We don't do joining pieces for any of our led strip as generally it shouldn't be installed in single runs longer than 10m due to voltage drop to obtain a continuous appearance.If you do have to join a section or 2 off-cuts, you would need to cut and solder a cable connection join or use a [led strip connector](#). NOTE - LED strip connectors may not fit in all LED profiles please check prior to ordering.

What colours is the LED Strip available in?

As standard, we stock 3 whites:

- Warm White 2700-3000K
- Natural White - 4000K
- Cool white - 6500-7000K

And RGBW colour changing which with the correct LED controller from us can be changed through 16 million different variations of colour.

What lengths does LED strip come in?

We typically stock all of our LED Strip in 5m rolls as by the m/cut to size.

Is this waterproof? Can it be used outdoors or in bathrooms?

The LED strip itself is available in IP21 non-waterproof & IP65, waterproof / outdoor use. If outdoor or in wet locations, you would need to use suitable waterproof IP rated LED tape with your installation denoted IP65/waterproof.

How do I stop the LEDS spotting/dot effect?

When it comes to that spotty/dotty LED effect, people often think a diffuser will solve this outright. Unfortunately that is not true and depends using a quality LED strip with sufficient number of LEDS per m such as our continuous spotless / non spotting LED Strip such as this one [no spotting / no dotting spotless LED strip / LED tape light](#)

What size LED tape / LED strip fits in our LED aluminium profiles?

All of our range of LED strip/led tape fits in any of our profile, so rest assured when buying both LED tape and LED profile from us, your products are compatible.