

240W LED Flood Sports Area Light / Exterior Car Park Flood Lighting - Philips Luxeon Lumileds® LEDs Flicker Free

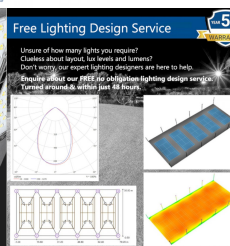
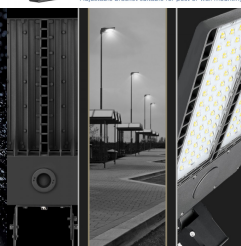
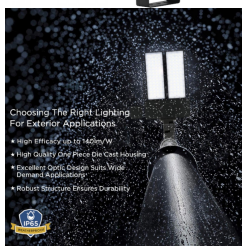
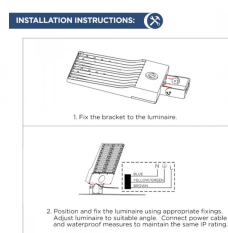
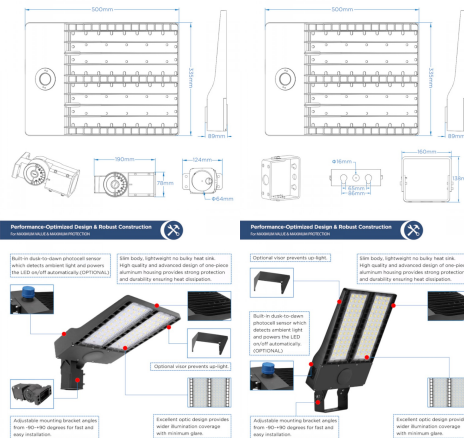
\$280.75

240W
Replaces
400W MHL

33,600lm



LED AREA/SPORTS LIGHTING DIMENSIONS LED AREA/SPORTS LIGHTING DIMENSIONS



PRODUCT INFORMATION

LED Type	Philips Lumileds LUXEON® 3030 LEDs
Warranty	5 Year
Part L Compliant	Yes
Dimensions	500mm x 335mm x 89mm
Weight	6.6kg
Windage	0.21m ²
Equivalent to	400W Metal Halide

PRODUCT INFORMATION

TECHNICAL SPECIFICATIONS

Power Consumption	240W
Input Voltage	90-305V AC
Power Factor	>0.95
Operating Temperature	-20°C to 50°C
L70 Rated Lifetime	+100,000 hours
Ingress Protection	IP65 / IK09

LUMEN PERFORMANCE

Luminous Efficiency	140lm/W
Beam Angle	60°
CRI (Colour Rendering Index)	>80Ra
Lumen Output	33,600lm

AVAILABLE OPTIONS

Colour Temperature	Natural White 4000-4500K
3-Hour Emergency Version	No
Built-in Microwave Occupancy Detector	No
1-10V Dimmable	Available Option
DALI Dimmable	On Request

240W (33,600lm) LED Flood Sports Area Light / Exterior Car Park Flood Lighting utilises an advanced designed one-piece die cast aluminium heat sink system. The light weight housing provides strong protection, durability and heat dissipation while keeping head loads to a minimum for post top mounting. In combination with superior efficiency driver the fitting delivers an efficacy of 140lm/W. The luminaire features an array of integrated Philips Luxeon Lumileds® LEDs for durability and an advanced PMMA photometric optic to ensure light uniformity and minimum glare.

Other benefits include minimised attraction to nocturnal wildlife due to non ultraviolet light, high light output even in cold temperatures and a range of lumen packages 14,000-42,000lm to suit different environments. Ideal for projects such as sports pitches, tennis courts, horse arenas/menages and industrial applications. The unit features a choice of either an adjustable post top bracket (60mm entry) for mounting to lighting columns or an adjustable flood light bracket for wall/building mounting.

Further options include a built-in photocell dusk til dawn sensor which detects ambient light automatically powering the light fitting on/off - Available in the drop down menu.



[DOWNLOAD PRODUCT INSTALLATION MANUAL / GUIDE](#)

Unit 2,
Delta Court,
Doncaster,
DN9 3GN
text_phone 03333 444 943
sales@theledstore.co | <https://ledexperts.co.uk/>