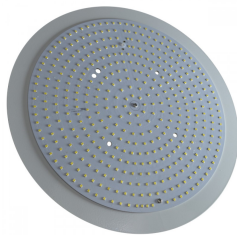
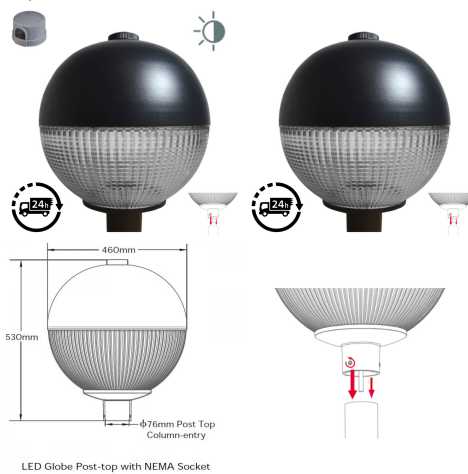


LED Globe Post Top Lantern 40W c/w Photocell NEMA Dusk til Dawn Sensor

\$272.48

4,400lm

40W
76mm
Column
Entry



DARK SKY FRIENDLY



3000K*



PRODUCT INFORMATION

LED Type	SMD3030 LEDs LM80
Warranty	5 Year
Part L Compliant	Yes
Dimensions	Ø460mm x 530mm
Weight	6.9kg
Windage	0.16m ²
Equivalent to	70 SON / MHL

TECHNICAL SPECIFICATIONS

Power Consumption	40W
Input Voltage	100-280V AC
Power Factor	>0.95
Operating Temperature	-20°C to 65°C
L70 Rated Lifetime	+55,000hrs
Ingress Protection	IP65

LUMEN PERFORMANCE

Luminous Efficiency	120lm/W
Beam Angle	150° x 150° (All Round Optic)
CRI (Colour Rendering Index)	>80Ra
Lumen Output	4,800lm

AVAILABLE OPTIONS

Colour Temperature	3000K (Dark Sky Friendly- 0% ULOR) 4000K
3-Hour Emergency Version	No

PRODUCT INFORMATION

TECHNICAL SPECIFICATIONS

LUMEN PERFORMANCE

AVAILABLE OPTIONS

Built-in Microwave Occupancy Detector No

1-10V Dimmable Available on Request

DALI Dimmable Available on Request

****Fitting Comes inclusive with integral 3-Pin NEMA Socket and Lucy Zodion 70lux Photocell****

The LED Globe series post-top street light is a modern designed LED luminaire for column/post mounting at heights of 3 - 8m, suited to general open areas such as pedestrian areas, car parks and low-to-medium traffic urban applications.

The unit features an IP65/IK08 RAL Black die-cast housing finished with a prismatic diffuser giving all round uniform illumination with minimal light spillage. The luminaire is capable of reaching 20-30lux from typical 5-6m installations. Furthermore, the light provides easy access to LED and Driver via a removable head and is compatible with standard external mains photocells for complete dusk-till-dawn control.

The unit is complete with base mount suitable for 76mm post top column-entry hence universally compatible. Additional benefits include 110lm/W efficacy, +55,000 hour maintenance free performance and minimal disturbance to nocturnal wildlife to the lack of UV/IR spectrum associated with LED photo-metric characteristics.

[DOWNLOAD PRODUCT INSTALLATION MANUAL / GUIDE](#)