

## LED Premium Street Light 30w - 3-6M Column Street Lighting Fixture - Dark Sky Friendly 3000K/4000K 0% ULOR

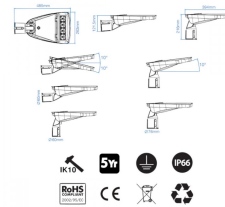
**£82.00**

**4,200lm**

**30W**  
Replaces  
**35W SOX**



### LED Premium Street Light DIMENSIONS



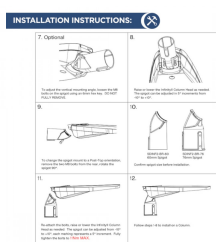
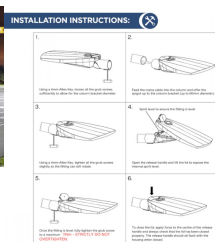
### Performance-Optimized Design & Robust Construction



### PHOTOCELL ENABLED



### DURABLE, ROBUST AND DEPENDABLE



### DARK SKY FRIENDLY



**3000K\***



### PRODUCT INFORMATION

LED Type	SMD3030 LEDs
Warranty	5 Year
Part L Compliant	Yes
Dimensions	617mm x 212mm x 118mm
Weight	3.85kg
Windage	0.08m <sup>2</sup>
Socket Type	Optional 3 pin NEMA Socket
Equivalent to	35 SOX

### TECHNICAL SPECIFICATIONS

Power Consumption	30W
Input Voltage	100-280V AC
Power Factor	>0.96
Operating Temperature	-20°C to 50°C
L70 Rated Lifetime	+100,000hrs

## PRODUCT INFORMATION

## TECHNICAL SPECIFICATIONS

Ingress Protection IP66

### LUMEN PERFORMANCE

Luminous Efficiency 140lm/W

Beam Angle 150° x 80°

CRI (Colour Rendering Index) >80Ra

Lumen Output 4,200lm

### AVAILABLE OPTIONS

Colour Temperature 3000K (Dark Sky Friendly- 0% ULOR) 4000K

3-Hour Emergency Version No

Built-in Microwave Occupancy Detector No

1-10V Dimmable Available on Request

DALI Dimmable Available on Request

Luminaire designed for column/post mounting at heights of 4 - 16m, with a range of sizes across 30W - 240W (4,200-33,000lm), IP66 design for exterior environments, with a low profile, sleek silver anodised aluminium body for harsh weather environments, Premium Street light is for urban applications such as car-parks, pathways and pedestrian areas. PMMA optic lens ensures a high degree of uniformity across a range of spaces and reduced light spillage, thus further enhancing this 140lm/W luminaire to give optimum lux levels through out. Furthermore the Premium Street light is compatible with standard mains photocells. Additional benefits include 100,000 hours maintenance free performance, with no-tools/quick release access to the internal control gear for installation. Unit available with either 60mm or 76mm entry bracket for both bottom & side-entry hence universally compatible. Angle of illumination can be adjusted around 10° for increased spread.

[DOWNLOAD PRODUCT INSTALLATION MANUAL / GUIDE](#)