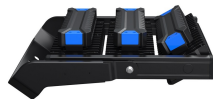


300W Asymmetric LED Flood Sports Area Light for Tennis Court, Football, Rugby Pitch, Horse Menage, Golf, Stadium, Arena

\$476.06 \$340.57

**LED SPORTS
MAST LIGHT
300W - 1500W**



300W Asymmetric LED Flood Sports Area Light for Tennis Court, Football, Rugby Pitch, Horse Menage, Golf

LED Series Heavy Duty Flood Lighting - Stadium / High-Mast Lighting - 300W (45,000lm) - IP65 - Philips Lumileds® LEDs (459mm x 230mm x 188mm) - NW (4000K)

Other benefits include minimised attraction to nocturnal wildlife due to non ultraviolet light, high light output even in cold temperatures and a range of lumen packages 14,000-220,000lm to suit different environments. Ideal for projects such as sports pitches, tennis courts, horse arenas/menages and industrial applications. The unit features a choice of either an adjustable mounting bracket.

PRODUCT INFORMATION

LED Type	Philips Lumileds® LEDs
Warranty	5 Year
Part L Compliant	Yes
Dimensions	495mm x 230mm x 188mm
Weight	7.3kg
Windage	0.12m ²
Equivalent to	600W SON

TECHNICAL SPECIFICATIONS

Power Consumption	300W
-------------------	------

PRODUCT INFORMATION**TECHNICAL SPECIFICATIONS**

Input Voltage	90-305V AC
Power Factor	>0.9
Operating Temperature	-25°C to 45°C
L70 Rated Lifetime	+100,000hours
Ingress Protection	IP66

LUMEN PERFORMANCE

Luminous Efficiency	150lm/W
Beam Angle	Symmetric 25° X 25° / 45° X 45°
CRI (Colour Rendering Index)	>80Ra
Lumen Output	45,000lm

AVAILABLE OPTIONS

Colour Temperature	Natural White 4000K
3-Hour Emergency Version	No
Built-in Microwave Occupancy Detector	No
1-10V Dimmable	Available Option
DALI Dimmable	Available Option